



Leading education
and social research
Institute of Education
University of London

THE PLACE TO BE FOR EDUCATION AND SOCIAL SCIENCE



The **Institute of Education** in focus



About the Institute of Education	1
IOE people	2
Facts and figures	4
Study	6
Research, consultancy and knowledge transfer	8
International	10
Schools and colleges	12
Services	15
Equality, diversity and sustainability	16

Every effort is made to ensure that the information provided in this brochure is accurate at the time of printing. The Institute of Education reserves the right at all times to withdraw or alter its programmes of study or other services.



About the Institute of Education

The Institute of Education (IOE) is a world-leading school for education and social science. With over 6,000 students and 800 staff, we are active in every continent.

A college of the University of London, our location at the heart of the UK's capital city reflects our position at the centre of education. We have trained more than 10,000 teachers over the past decade, offer unparalleled professional development opportunities, and the findings of our research have influenced government activity and policy in areas from early years, to music education, to the role of education in international development.

We also specialise in study and research in health, psychology and longitudinal research, among other areas of social science. Our three birth cohort studies have had a major impact over many years on policy for health, gender equality and young people.

Overall, our research attracts funding of over £25 million per year, including £16.3m for individual projects. In the last Research Assessment Exercise, we topped the league tables for education research, coming in the top ten of leading research universities across all subjects.

We are a member of the 1994 Group, made up of 19 universities which combine world-leading research with high quality teaching and an excellent student experience. We work closely with our neighbouring University of London colleges in Bloomsbury and with numerous other organisations including over 600 London schools and colleges as well as national charities and museums, and universities worldwide.

Our mission

The mission of the Institute of Education is to pursue excellence in education and related areas of social science and professional practice. In undertaking this mission, we will adhere to the highest standards of academic rigour in all our work, be guided by a concern for truth and justice, and make a positive contribution to the development of individuals, institutions and societies facing the challenges of change.

To this end, we will engage in:

- research and scholarship of national and international significance
- high quality, research-informed postgraduate and post-experience learning and teaching programmes
- the promotion of new ideas in policy and professional practice grounded in our research and teaching expertise
- consultancy and other services to support and develop the quality of educational systems and related fields of policy and practice.

IOE people

Academic leadership at the IOE is provided by over 80 world-class professors and readers. In addition to our 350 teaching and research staff, our academic staff are supported by professional staff based in faculties, the directorate, estates and facilities, finance, human resources, the international office, IT, the library, marketing and development, the registry and research and consultancy services.



The Director

Professor Chris Husbands

Chris Husbands first came to the IOE as a PGCE student. He was a history teacher and senior manager in urban comprehensive schools before moving into higher education; he was formerly director of the Institute of Education at Warwick University and dean of education and lifelong learning at the University of East Anglia. He moved to the IOE as professor of education and dean of the Faculty of Culture and Pedagogy in 2007 before being appointed director in 2010. He has written widely on aspects of education policy and on curriculum and teacher development, and retains an interest in the teaching and learning of history. He led major reviews of the development of children's services in England and of children's outcomes in high performing education systems. He is currently a board member of the Training and Development Agency for Schools, and a member of the advisory learning panel at the National Trust. He has served as a consultant or adviser to numerous education ministries internationally and to the UK government and related agencies, including Ofsted and the National College for School Leadership.

PROFESSOR CHRIS HUSBANDS, DIRECTOR, IOE

"The Institute is a fabulous place: stimulating, relevant – intellectually exciting and engaged practically. Its core concerns – how education and society interact to improve people's lives – are key issues for everyone."

WORLD-CLASS PROFESSORS AND READERS

80



Dr Mary Stiasny

Mary Stiasny is pro-director: learning and international. Her principal focus is on excellence in teaching and the practice of teaching; a teacher educator, she has interests in pedagogy, mentoring and school partnership. Her key academic interests are education policy and internationalism in

education. Her strategic oversight of learning and teaching includes quality assurance and enhancement, and the international strategy. At the heart of her portfolio is the student experience, and a commitment to excellence in working with students.



Professor Michael Reiss

Michael Reiss is pro-director: research and development. His main research interests are in understanding how science is learned and improving the ways it is taught, and in school sex education and bioethics. He is chief executive of Science Learning Centre London, vice president and

honorary fellow of the British Science Association, honorary visiting professor at the Universities of Birmingham and York, director of the Salters-Nuffield Advanced Biology Project, a member of the Farm Animal Welfare Committee and an academician of the Academy of Social Sciences.



Professor Richard Andrews

Richard Andrews is professor of English and dean of the Faculty of Children and Learning. He is author of the recent *Re-framing Literacy* and co-author of *E-learning Theory and Practice*, and of *Developing Writer*. He has co-edited two handbooks, on e-learning and the digital dissertation

respectively. In 2011 he was elected to the Academy of Social Sciences and is a fellow of the Royal Society of Arts (RSA); and was also appointed as chair of the advisory board for the internationally leading Cambridge School Shakespeare. He is chair of the China and Taiwan working group for the IOE.



Professor Susan Hallam

Susan Hallam is professor of education and dean of the Faculty of Policy and Society. Her research interests include disaffection from school, behaviour improvement, school-home links, parenting programmes, ability grouping in schools, music psychology and music education. She is the author

of numerous publications in these areas. She was elected to the Academy of Social Sciences in 2003, is a fellow of the RSA, past chair of the Psychology Education Section of the British Psychological Society and past editor of the journals *Psychology of Music* and *Psychology of Education Review*.

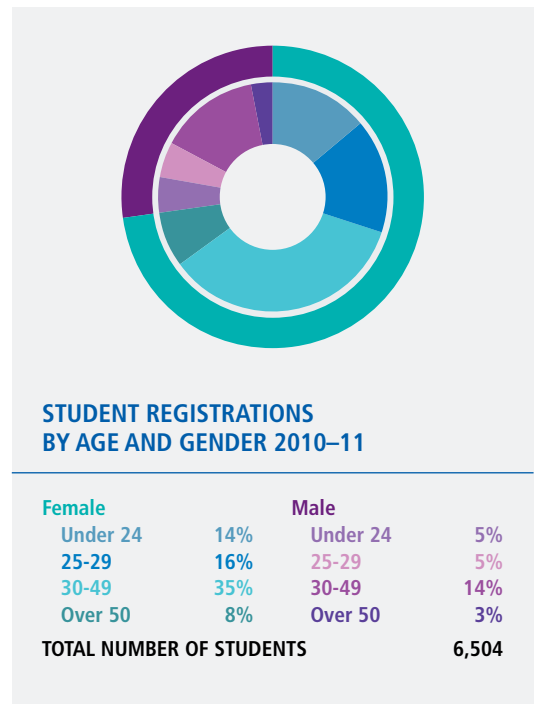
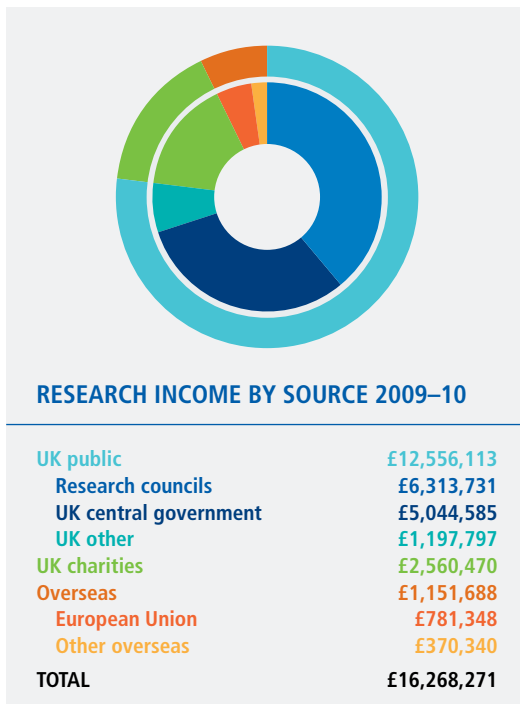
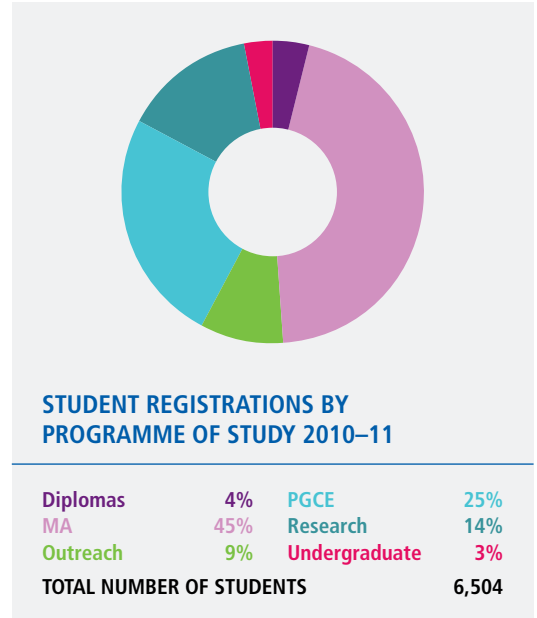
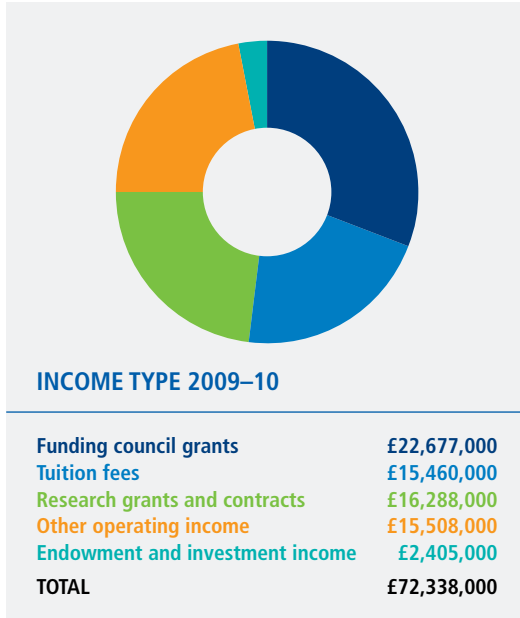


Professor Andrew Tolmie

Andrew Tolmie is dean of the Doctoral School and professor of psychology and human development. He is a developmental psychologist with long-standing interests in dialogue and its uses in educational settings to promote learning, especially in the context of science education. Much of his

research has focused on the quantitative modelling of these effects. He is deputy director of the Centre for Educational Neuroscience, editor of the *British Journal of Educational Psychology*, and lead editor for the British Psychological Society's Editorial Advisory Group.

Facts and figures

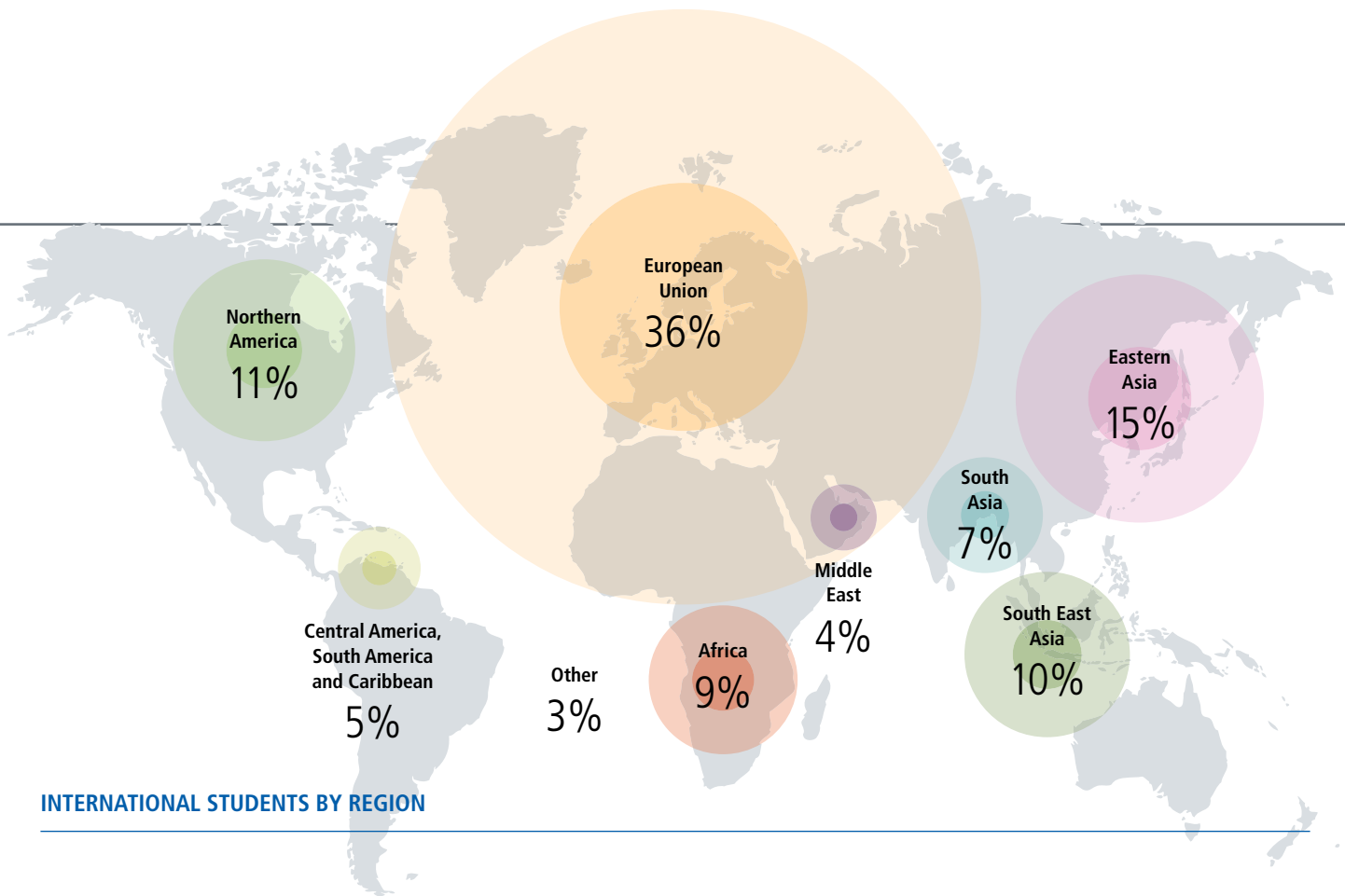


RANIA AL-NAKIB, PHD STUDENT, IOE

"I felt that the research being done at the IOE was so cutting-edge and important. That was one of the main things that brought me here."

INCOME FOR 2009–10 HAS EXCEEDED

£70 million



INTERNATIONAL STUDENTS BY REGION

History

The Institute of Education was founded in 1902 as the London Day Training College (LDTTC) and maintained by the London County Council in association with the University of London. At a time when most training for elementary teaching took place in single-sex colleges, the LDTTC opened its doors to both women and men. In the 1920s, the college introduced masters and PhD degrees in education, and in 1932, the LDTTC was transferred wholly to the control of the University of London, and became known as the Institute of Education. During the late 1940s and 1950s, the IOE was responsible for the education and training of one in four new teachers in England and Wales. Denys Lasdun – who also created the Royal National Theatre and the Genoa Opera House – was appointed in 1960 as architect for a new building, and we finally moved into our current home in Bedford Way in 1976. In 1987, a royal charter set the seal upon our status as an independent college of the University of London.

Academic organisation

The Institute is currently made up of two faculties, each of which contains several departments:

Faculty of Children and Learning

- Department of Children, Families and Health
- Department of Culture, Communications and Media
- Department of Curriculum, Pedagogy and Assessment
- Department of Early Years and Primary Education

Faculty of Policy and Society

- Department of Lifelong and Comparative Education
- Department of Humanities and Social Sciences
- Department of Psychology and Human Development
- London Centre for Leadership in Learning
- Department of Quantitative Social Science

Staff in each faculty join forces in research centres and special interest groups to combine expertise and facilitate interdisciplinary working.

DR MARY STIASNY, PRO-DIRECTOR: LEARNING AND INTERNATIONAL, IOE

"I am delighted that nearly 14 per cent of the UK's international postgraduate education students (HESA report 2009–10) choose the IOE as their base."

FUNDED RESEARCH PROJECTS PER YEAR

250

Study



From our BA Education Studies and initial teacher training programmes to post-doctoral studies, we offer an unrivalled range of study options for people at all stages of their careers and involvement with education.

Our diverse cultural community is made up of over 6,000 students, including international students from more than 100 countries. In the National Student Survey 2011, 93 per cent of students were satisfied or very satisfied with the quality of teaching at the IOE. Although we are best known for our expertise in education, our programmes are also relevant to people working in health and social care, local and national government, charities, voluntary organisations and NGOs, and the private and commercial sector. Our programmes are strongly influenced by our cutting-edge research in terms of both content and teaching methods.

Teacher training

ioe.ac.uk/teach

Every year, more than 1,000 graduates undertake our Postgraduate Certificate in Education (PGCE), employment-based initial teacher training (EBITT) and assessment only programmes. We also provide the Teach First programme for London, in collaboration with Canterbury Christ Church University and King's College London. All initial teacher training programmes rated in our last Ofsted inspection were deemed outstanding or good with outstanding features. Our programmes are offered in partnership with around 600 schools and colleges, and our tutors collaborate with prominent organisations across the capital including Shakespeare's Globe Theatre, the Natural History Museum and the British Film Institute.

Masters programmes

ioe.ac.uk/masters

Our 50+ masters degrees include MA and MSc programmes in education at all levels, international development, child development and psychology. We also offer Master of Teaching (MTeach) and Master of Teaching and Learning (MTL) programmes as well as MBAs for leaders and managers in schools and higher education institutions. Most programmes are offered both full-time and part-time, and many courses are taught during the evening to suit busy professionals. Some are offered fully or partly by distance learning.



Research degrees

ioe.ac.uk/doctoral

Over 800 students – the largest research student community in the field of education in the UK – are undertaking studies at the IOE, where they are registered for either our MPhil/PhD in Education; for one of our two professional doctorates in education; or for a research-based masters degree. We provide a supportive and intellectually stimulating environment for doctoral research, including comprehensive research training and a wide range of seminars on current doctoral and funded research.

Professional development

ioe.ac.uk/profdev

Our London Centre for Leadership in Learning (LCLL) provides a range of research-informed programmes for early, middle, senior and specialist leaders. IOE-wide, we offer specialist graduate, postgraduate and professional diplomas and certificates in special education, adult education and higher education, as well as a comprehensive programme of short courses, suitable for teaching professionals and those working within children's services. We can plan bespoke courses at competitive rates for individual institutions. Our short courses cover all main subject areas and issues such as assessment and inclusion, covering the early years through to primary, secondary, further and higher education levels.

NEW TEACHERS TRAINED AT THE IOE EACH YEAR

1,000+

Undergraduate

ioe.ac.uk/ugrad

Our part-time BA Education Studies offers four pathways specialising in theory of education, childhood studies, education management and lifelong learning. Our two foundation degrees, designed around work-based learning for people who work with children and in lifelong learning settings, can lead into further study, including a top-up BEd or BA degree.

IOE alumni

ioe.ac.uk/alumni

Our graduates work in and lead schools, colleges and higher education institutions in London, the UK and worldwide. Among our other high-profile alumni are: Quentin Blake, the children's illustrator and first children's laureate; the prize-winning novelists Louis de Bernières and Irene Sabatini; Olympic rowing champion James Cracknell; Fiona Mactaggart MP; Koichi Yamauchi, member of the Japanese House of Representatives; and the chair of Ofsted, Baroness Morgan.

CLARE CHALAYE, HEAD OF PRIMARY, LONDON SPECIAL SCHOOL

"The IOE is well located and the quality of teaching is excellent. I am a better teacher because of my study."

Research, consultancy and knowledge transfer

The IOE is a leading centre of social research, undertaking around a quarter of the education research carried out in UK universities. In a typical year, we have around 250 externally funded projects in progress.

Our total research funding for 2009–10 amounted to £25.5 million, which included £16.3 million in grants for individual projects. In that year we were also the second highest recipient of funding from the Economic and Social Research Council, receiving around 5 per cent of their total research expenditure.

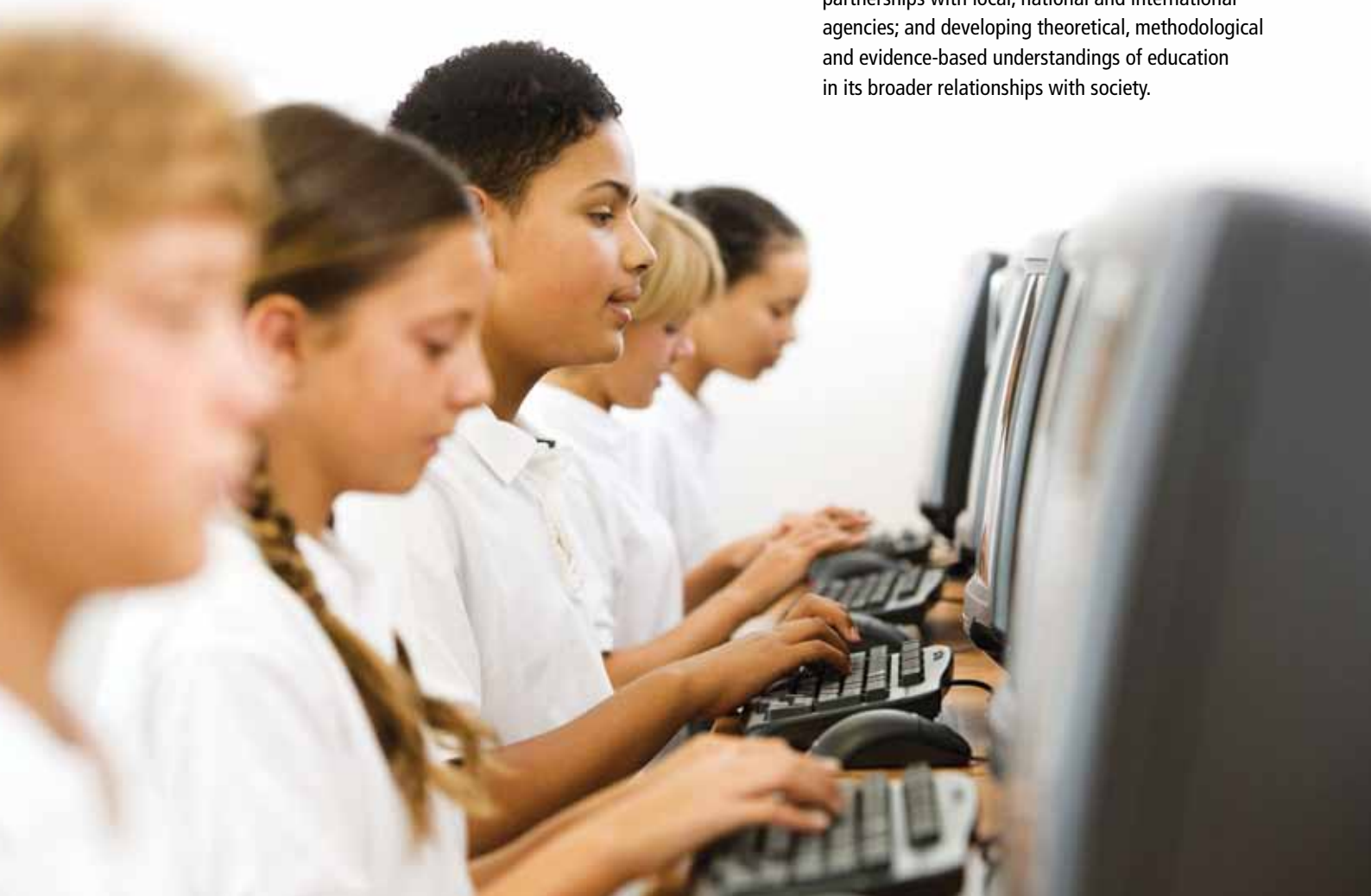
Our research funding comes from a wide range of sources, including research councils, charities, government departments, local government, international agencies and industry. Over the last ten years, we have collaborated with half of all UK universities on funded research projects related to education, and with universities in 22 of the EU member states. We are also forging strategic partnerships with major educational research institutions worldwide.

In the most recent Research Assessment Exercise (RAE 2008), we had the highest proportion of world-leading research in the field of education, placing us in the top ten overall of UK universities.

Research mission

Our research aims to have a direct bearing on all members of society, addressing fundamental questions related to education theory and practice; equality, social justice and human rights; the foundations of education; and connections between education and other social domains such as the family, health and welfare.

We set out to raise the standard of educational research, by promoting the highest standards of quality and ethical integrity; enhancing public debate about education; welcoming and pursuing partnerships with local, national and international agencies; and developing theoretical, methodological and evidence-based understandings of education in its broader relationships with society.





Through these means we aspire to understand the role and improve the standard of education as a whole, in schools and throughout life and 21st century society.

Research projects

Examples of current and recent research include:

Effective Pre-School, Primary and Secondary Education (EPPSE)

This longitudinal study funded by the Department for Education has followed the development of 2,800 children from the early years onwards. The research evidence has been used to inform the government's expansion of the early years sector.

Millennium Cohort Study

The Millennium Cohort Study is tracking almost 19,000 UK children born in 2000 and 2001, and presents an exceptional opportunity to understand the social conditions surrounding birth and early childhood and study their long-term impact.

Getting the X Factor

Part of the Technology Enhanced Learning (TEL) research programme, this study is developing an intelligent system to help 11- to 14-year-olds understand algebra.

Music for Life

This project looked at groups of older people in Gateshead and London to see how singing and playing instruments enhanced their quality of life.

Risk in the Curriculum

Funded by the Wellcome Trust, the findings of this study provided a theory for teaching risk, an important consideration in making decisions in everyday life, work and government policy-making.

Reaching and Teaching Marginalised Children in Malawi and Lesotho

This three-year project developed an intervention for schools working in rural areas of Africa with high HIV prevalence rates.

YiPPEE: Young people in public care

This EU-funded study made recommendations for Europe-wide policy on the education of young people in and after public care.

Consultancy and knowledge transfer

Over the past five years, the value of IOE consultancy services has grown by 62 per cent. Drawing on our research expertise and combining it with a dedication to practitioner relevance, we provide research-based, practical solutions to clients in the public, private and not-for-profit sectors. Our business development team works with clients to identify relevant expertise within the IOE and to ensure we provide the support and answers needed. We offer consultancies locally, nationally and internationally, contributing to improving the provision of education on every continent in its widest sense.

Consultancy projects

Consultancies range from one-day initiatives such as in-service training or work on organisational functioning and change, to longer-term projects, with a single consultant or a multidisciplinary team assigned to the project depending on the client's needs. We currently provide consultancy services for schools, health services, local authorities, universities, government and non-government agencies, ministries of education and professional bodies.

Publications

ioe.ac.uk/publications

IOE authors produce over 400 publications each year which disseminate the results of our research to scholars and practitioners who build on this work and put it into practice. In addition, our own Institute of Education Publications are essential reading for academics, researchers and practitioners who research and work in the fields of education and the social sciences. Recent titles include *Research Engagement for School Development* and *You Can Help Your Country: English children's work during the Second World War*.

International

Based in the heart of London, the IOE benefits from a rich diversity and broad international reach which mirrors that of the capital city.

As home to one of the world's richest concentrations of research and expertise in education, the IOE has influence across cultural and national borders. Our mission, our partnerships, our community and our perspectives are all measured on a global scale. With students from over 100 countries and alumni on every continent, and with research, consultancy projects and institutional partnerships spanning the globe, the scope of our work is truly international.

International research and consultancy

The IOE's commitment to influencing and shaping education around the globe can be seen in the extent and impact of our research internationally. In the most recent Research Assessment Exercise, 35 per cent of our research was judged world-leading, with a further 30 per cent seen as internationally excellent and 25 per cent internationally recognised.

The ideas and knowledge generated by IOE academics and partners have had measurable impact in many international contexts. In Tanzania and Nigeria, for instance, we have worked with ActionAid in a project to transform girls' education. Other projects similarly address the challenges of the Millennium Development Goals, from studies of education and urbanisation to effective international policy for basic skills and adult literacy. We are a founder member of the London International Development Centre (LIDC), which carries out research in low- and middle-income countries with the aim of helping some of the poorest societies tackle the challenges they face.





As consultants, the IOE's academics use their expertise to solve problems, improve systems and enhance practice in dozens of countries every year. Responding, often at short notice, to requests from governments and agencies, we have run leadership programmes in the Middle East, curriculum design projects in Latin America, and higher education management programmes for China, Japan and Brazil.

Partnerships

The scale and quality of the IOE's work attracts partners with international reputations. We are a founder member of the International Alliance of Leading Education Institutes. This grouping of major education universities and faculties from across the world seeks to pool its research and expertise to develop solutions to the world's most pressing educational and related social problems.

We have co-organised a series of major international events with our key partner in China, Beijing Normal University. These have included biennial conferences taking place in London and Beijing, exploring issues of concern beyond the UK and China and, crucially, creating a space for academics to share practical answers to substantial questions.

At the heart of the IOE's international collaborations is mutuality. Key partners include Seoul National University, Melbourne University, Kyoto University, the University of Wisconsin-Madison, the University of Toronto, the University of São Paulo, the National Institute of Education of Nanyang Technological University in Singapore and the National Council

of Educational Research and Training in India. These partnerships are underpinned by a rich programme of knowledge exchange and research collaboration.

As well as offering our own Centenary Scholarships for international students who demonstrate academic excellence and the desire to improve education in their own country, we work with a range of organisations seeking to widen access for the most able students from around the world. These include the China Scholarship Council, the UK-US Fulbright Commission, the Commonwealth Scholarship Commission and the Said Foundation.

Our engagement with Europe goes back several decades. With almost 100 partner universities, the IOE is a second home to the students, academics and professional staff who join us each year under the Erasmus mobility scheme. Their contributions to the IOE further enrich and expand our academic and professional community.

PARTNER UNIVERSITIES IN EUROPE

90

CAREW TREFFGARNE, DEPARTMENT FOR INTERNATIONAL DEVELOPMENT

"The IOE's SOFIE Project represents a significant breakthrough in developing more flexible ways of addressing the educational needs of vulnerable children."

Schools and colleges

Our accredited programmes of study and short courses (see page 6) provide opportunities for education professionals to enhance their teaching skills, update their knowledge and share insights with other practitioners. In addition, we can tailor our expertise in a range of ways to achieve improved outcomes for your school or college.

School partnerships

schoolpartnerships@ioe.ac.uk

Our school partnerships support the professional development of teachers and support staff across all career stages, responding to local needs and working towards improved outcomes for pupils. We can provide a dedicated partnership adviser who will put together a cost-effective, flexible and sustainable package of support, and help schools explore ways to work in clusters. For example, we can offer a tailored Master of Teaching programme to suit your cluster's needs, or an embedded adviser working across teacher development programmes on a regular basis.

Teaching training partnerships

We work in partnership with around 600 Greater London schools and colleges to develop and deliver our teacher training programmes. Partner schools and their teachers benefit from professional development (including mentor training), collaborative research projects, and access to the best new teachers through student placements. Schools have access to the IOE library and media services; can hire accommodation at the IOE at internal rates; are eligible for fee discounts; and receive free or discounted tickets to special events.

London Centre for Leadership in Learning (LCLL)

ioe.ac.uk/lcll

LCLL offers research-informed school leadership courses, such as Early Leadership; Developing Middle Leaders; Widening Leadership (for prospective senior leaders); and tailored programmes for leaders at all levels. We also support specialist roles via the Innovative Leadership of CPD programme and tailored support for black and minority ethnic leaders, and offer National College programmes. Our consultancy work is designed jointly with clients to bring about effective and lasting organisational change, with aspects including mentoring and coaching, action and enquiry-based research approaches, and impact evaluation. LCLL members are eligible for free or discounted events, and benefit from invitations to participate in research, work-based projects and networking.

Science Learning Centre London (SLCL)

ioe.ac.uk/slcl

Science Learning Centre London is part of the national network of Science Learning Centres, a joint initiative by the Department for Education and the Wellcome Trust. The centre provides a programme of professional development for science teachers (primary, secondary and FE) and technicians in London using its high-quality teaching rooms, laboratories and ICT suite as well as a roof laboratory. Its team of experienced trainers work with a wide range of partners in London, run a thriving outreach offer in schools and colleges and contribute to research projects and consultancy work.

SLCL TRAINING DAYS SINCE 2004

16,000

RACHEL CARR, INTO UNIVERSITY, LEP AWARD WINNER 2010

"It is a wonderful honour to have the impact of our work with disadvantaged young people recognised. Such a prestigious award is an impressive endorsement of our commitment to building partnerships across London."

Holocaust Education Development Programme (HEDP)

ioe.ac.uk/hedp

Funded by the Pears Foundation and the Department for Education, the HEDP is the UK's leading centre for the study and development of teaching and learning about the Holocaust, and is the largest provider of teacher professional development in Holocaust education. It offers a free two-day CPD programme to every state secondary and middle school in England, which brings the latest historical thinking and leading edge educational practice into the classroom.

National Centre for Excellence in the Teaching of Mathematics (NCETM)

ioe.ac.uk/ncetm

Funded by the Department for Education, the National Centre for Excellence in Teaching Mathematics provides a sustainable national infrastructure for mathematics professional development in England. The centre provides free resources to teachers and trainee teachers, and encourages schools and colleges to share good practice locally, regionally and nationally.

London Education Partnership Awards

lepawards.org.uk

The London Education Partnership Awards, run by the IOE, recognise and reward successful partnerships that work to raise the aspirations of Londoners through education. The awards highlight best practice in partnerships in the education field that work to widen participation in higher education and improve social mobility, and are open to schools, sixth form and further education colleges, employers, voluntary sector organisations and higher education institutions.

Centre for Post-14 Research and Innovation

ioe.ac.uk/post14

The Centre for Post-14 Research and Innovation aims to support the creation of an inclusive and high-performing post-14 education and training system in England, based on dialogue between practitioners, policy-makers and researchers. It provides events, seminars, conferences and continuing professional development for those working in the post-14 sector and undertakes research consultancy for a range of organisations including national agencies, professional associations and teacher unions, local authorities, 14–19 consortia and individual schools and colleges and independent training providers.





Services

Our main building in central London has a number of spaces which can be hired for events or meetings; these are also used for our public conferences and seminars. It also houses the renowned Newsam Library and the Students' Union.

Conferences and events

Our five lecture halls, 25 lecture rooms, four committee rooms and our drama studio range in capacity from ten for smaller intimate meetings to over 900 people in our Logan Hall. Logan Hall is used extensively for shows by overseas community groups, recently including those from Indian, Iranian, Russian, and Chinese organisations. The facilities are available year round, are housed in a single building, and can be hired singly or in combination. We can provide audiovisual equipment and technical assistance, and will work in partnership with our dedicated on-site catering team to organise and tailor all aspects of food and drinks for your event.

Many organisations use the IOE as a base for conferences and other events, with recent examples including:

- the British Educational Research Association (BERA) for their 2011 conference
- University College London (UCL) and the School of African and Oriental Studies (SOAS), for their graduation ceremonies
- London Organising Committee of the Olympic Games (LOCOG)
- Teach First, for their national conference
- Beat (Beating Eating Disorders).

In addition, we host at least 200 of our own events each year, which range from research presentations to longitudinal survey briefings to professorial lectures to major conferences in early childhood, international development and other areas. Annual events for alumni feature high-profile names, including Michael Rosen and Quentin Blake.

Library

The Newsam Library and Archives is the best education research resource in Europe. In addition to supporting IOE staff and students, it welcomes enquiries from all scholars, researchers, and others in the community. It contains over 300,000 volumes, including a copy of every book on education published in the UK, and a wide range of electronic resources, including 4,000 journal titles available electronically. Our 23 special collections and 100+ deposited archive collections contain unique historical resources on education, and influential organisations and individuals working in the field.

Access is free of charge to all scholars and researchers, and the main library is open seven days a week.

Students' Union

Our newly refurbished Students' Union has a bar, cafe and shop for the use of visitors and staff as well as students. The nearby University of London Union provides extra services including a gym with swimming pool, print shop and concert venue.

Location

Located in central London, the Institute is within walking distance of several other University of London colleges as well numerous museums, galleries, theatres, cinemas, shops, cafes, restaurants and hotels to suit every budget.

We are well served by local, national and international transport links. The London Underground station at Russell Square is less than five minutes' walk away, and there is a direct line from this station to London (Heathrow) Airport, a journey which takes approximately 45 minutes. King's Cross, St Pancras and Euston national rail stations and underground stops are also within easy walking distance or a short taxi ride.



Equality and diversity

The Institute of Education welcomes a diverse community of staff and students. We seek to develop a community whose members value each other and contribute to the Institute's mission to be a centre of excellence in education and social science. Our aim is for an open, supportive environment where students and staff are given the support needed to realise their goals and aspirations. We seek to remove the barriers that prevent historically disadvantaged groups from realising their potential.

We actively embrace our legal responsibilities and aim to go beyond them. We will treat all staff, students, visitors and applicants for employment or study equitably. No one will be accorded less favourable treatment because of age, disability, ethnic or national origin, gender, family circumstances, marital/civil partnership status, race, religious beliefs, sexual orientation or transgender status.

Sustainability

The Institute of Education is committed to the concept of sustainable development. We believe that sustainability is the responsibility of all who work or study at the IOE, and this ideal is promoted through the work of our sustainability network.

We actively seek to conserve natural resources through the responsible use of sustainable energy sources, proactive recycling and the use of recycled materials.

In all our activities we aim to be a responsible neighbour within our community and a constructive partner in local initiatives.

KEN SPOURS, ASSISTANT DIRECTOR: EQUALITIES AND ENGAGEMENT, IOE

"The IOE is absolutely committed to improving opportunity for all and innovative new projects are underway to ensure that equalities are embedded in everything we do."

% OF RECYCLED MATERIAL IN THIS BROCHURE

55



This brochure is printed on
55 per cent recycled paper.
Please recycle it when you
have finished using it.

Design rfportfolio.com
Print Innovative Output Solutions
Photography Philip Meech
Editing Lucy Stableford-Grieve, Emily Brewer

Contact us



Institute of Education
20 Bedford Way
London WC1H 0AL

Telephone +44 (0)20 7612 6000
Email info@ioe.ac.uk

Study

Telephone +44 (0)20 7612 6043
Email enquiries@ioe.ac.uk

Research and consultancy

Telephone +44 (0)20 7612 6092
Email m.reiss@ioe.ac.uk

Conferences

Telephone +44 (0)20 7911 5546
Email s.fisher@ioe.ac.uk

International office

Telephone +44 (0)20 7612 6124
Email internationaloffice@ioe.ac.uk

This document is available in a range of alternative formats.

Please contact Marketing for assistance.

Telephone +44 (0)20 7911 5556

Email info@ioe.ac.uk